

BURKAY® LEGEND 2000®

High-Efficiency Hot Water Supply/Hydronic Heating Boiler

LOW-NO_x

**Provides 90% Thermal Efficiency
Plus Famous Burkay® Engineering and Reliability**



Here, by every measure is the world's best-engineered, high-efficiency hot water supply boiler.

The Legend 2000®, which easily exceeds all national standards, brings together every detail in advanced boiler design: 90% thermal efficiency, virtually flawless performance, unmatched ease of installation, operation and service. Plus, astonishing Burkay® reliability and longevity.

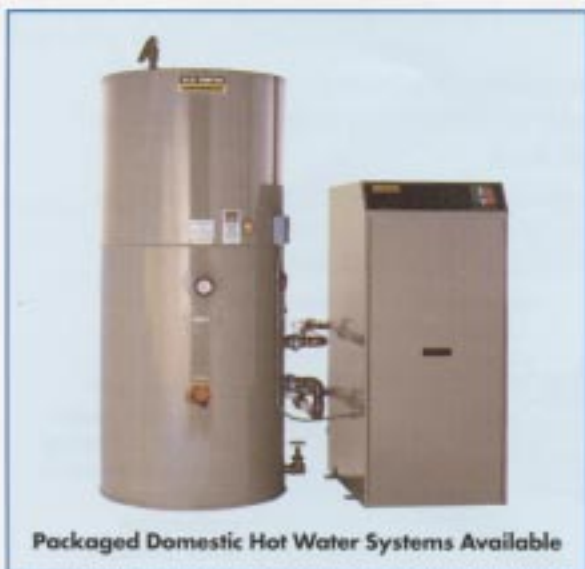


Legendary Features:

- **Advanced combustion technology** – Assures 90% thermal efficiency. This high efficiency is accomplished through advanced pre-mix technology—gas and air are precisely mixed for optimum burner performance. *Cost Savings!*
- **Exclusive heat exchanger design** – A special integrated baffle design exposes more surface area to the combustion system. This patent-pending configuration eliminates the need for troublesome “V” baffles.
- **All waterways of copper, brass or bronze** – High-quality metals, such as these, with similar metal-lurgical characteristics, greatly reduce stress on castings and minimizes the threat of electrolysis and leaks.
- **Gasketless heat exchanger and wet section** – This superior gasketless wet section design assures reliability and longevity. No deterioration of gaskets exposed to heat and pressure. *No leaks!*
- **All stainless steel burner** – A radial-fired stainless steel burner design. This laser-welded, non-ferrous corrosion-resistant Inconel™ 625 super alloy construction allows for quiet operation and years of reliable performance. 5-year warranty. *No moving parts!*
- **Compact design** – Small footprint—23" X 32"* saves valuable space and allows ease of entry and modular installations. The Legend 2000® fits easily through a standard 30"* doorway. *Ideal for retrofits!*



More efficient baffle design.



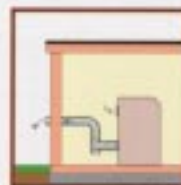
Packaged Domestic Hot Water Systems Available

Features Continued:

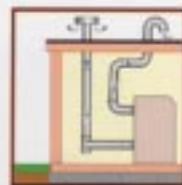
- **Dia-Scan™ II diagnostic system** – Microprocessor-based control. Monitors every electrical boiler function. Pinpoint diagnostic capabilities. Digital LED Temperature display. Function status and fault LEDs. Plus or minus 1 degree accuracy. Optional remote control panel and modem software.
- **Hot surface ignition** – Provides safe, reliable 120 volt ignition. Removable without pulling the burner.
- **Factory-mounted pump – hot water supply boiler only** – Enclosed circulating pump mounted for ease of maintenance and cool operation away from venting.
- **Sealed combustion** – Increases efficiency while reducing NO_x. No flue spillage through barometric dampers. *Environmentally Friendly.*
- **Legendary jacket design** – Easy lift-off front panel allows for optimum access to all components and controls. Total jacket cabinetry can be removed while unit is running. No pressurized jacket or gaskets.
- **Zero clearance** – Versatile zero clearance design allows for maximum adaptability.
- **Factory tested** – Every Legend unit is water-and fire-tested to assure reliable operation.
- **Venting flexibility** – Many convenient venting options to choose from. Options allow for direct-venting with protection from flue recirculation.
- **Warranty** – Five-year limited warranty, backed by A.O. Smith's reputation and over 400 service centers nationwide.



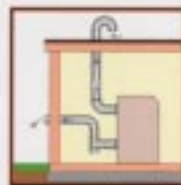
Mechanical Venting



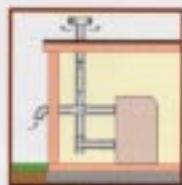
Horizontal Sidewall Venting



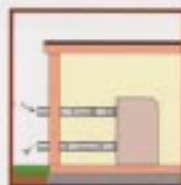
Vertical Direct-Venting



Horizontal Sidewall Direct-Venting w/Vertical Through the Roof Intake



Vertical Direct-Venting w/Sidewall Intake



Horizontal Sidewall Direct-Venting



Vertical Venting

Direct-Vent/Sealed Combustion

The ultimate venting system for either horizontal or vertical applications.

This system gives the specifier and installer optimum venting flexibility in placing the Legend 2000® at point of use. This safe, two-vent system allows clean, un-contaminated air to be drawn directly into the unit. The flue gas products are expelled directly through the wall to the outside. This two-vent system protects the unit from flue products being re-circulated.

Sidewall or Vertical

The Legend 2000® Series can be vented directly through an outside wall or vertically up through the roof. Quick and simple. Ideal for retrofit and cost-saving installations.

OTHER STANDARD FEATURES

- ASME 160# W.P. • ASME pressure valve • Low-air pressure switch
- Pump and flow switch mounted • 24 volt controls
- Brass drain valve • Pre-wired for Building Management Control
- Low-gas pressure switch • Digital thermometers
- Manual reset—Hi limit

OPTIONS

- Alarm bell • Pump post purge • Low-water cutoff
- Through-the-wall venting • Direct/Sealed vent
- Skid mounted systems • FM, CSD-1, IRI, III. School Code

All Dimensions in Inches

Model	BTUH Input		BTUH Output		Recovery in GPH @90% Thermal Efficiency				Vent Size	Height	Width	Depth
	Natural	LP	Natural	LP	80 TR		100 TR					
					Natural	LP	Natural	LP				
LWLB-500	500,000	450,000	450,000	405,000	682	614	545	491	6	53	23	32
LWLB-750	750,000	675,000	675,000	607,500	1023	921	818	736	6	53	23	32
LWLB-1000	1,000,000	880,000	900,000	774,000	1364	1173	1091	938	7	61	27	39

