

BURKAY GENESIS®

Space-Saver Mid-Range Efficiency Gas Boiler

MEETS
ASHRAE /IES
90.1-1992

84% Thermal Efficiency, Smaller Footprint, Extreme Venting Flexibility, Outstanding Value



The rear-venting design allows units to be stacked squarely over one another to save space and simplify manifolding.



Packaged Domestic Hot Water Systems Available.



Genesis Outdoor Models Available.

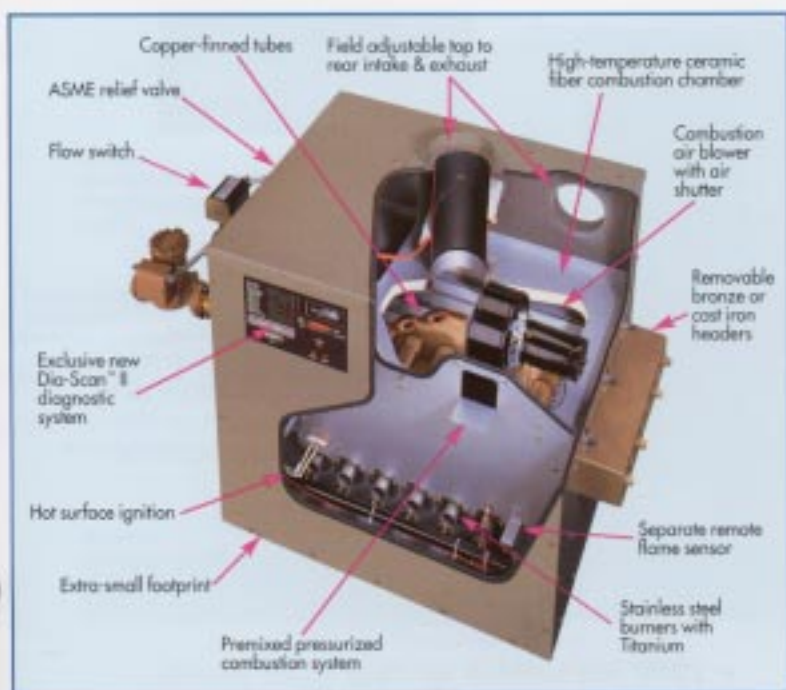
Genesis is a new generation of commercial boilers designed and engineered to a new benchmark in installation and operational flexibility. It is proof that mid-range efficiency boilers don't have to be big, difficult to install, or expensive, like so many ordinary boilers.

High-Efficiency Features:

- **Limitless applications** – Standout choice for everything from schools, apartment buildings, motels and hotels to light industrial and more.
- **Space-saving design fits where others can't** – As much as 1/3rd smaller than other boilers. With the optional stack rack, two units can be put in the same space as one.
- **Advanced fan-assisted combustion system** – Optimizes gas/air ratio and forces air mixture into the burners for more efficient combustion.
- **Efficient copper heat exchanger design** – Advanced heat exchanger design uses integral-finned extruded copper tubes to increase transfer of heat which translates into a high 83.7% thermal efficiency rating.
- **Hook up-and-run simplicity** – Just connect water, gas, electrical and venting, set temperature, flip switch, and you're off and running.
- **Exclusive multi-mount exhaust fitting** – Gives you option of either rear-or top-venting connections. Greatly simplifies installation and manifolding of stacked units.
- **Extremely low-NOx emissions**
- **Dia-Scan™ II diagnostic system** – Microprocessor-based control. Monitors every electrical boiler function. Pinpoint diagnostic capabilities. Digital LED Temperature display. Function status and fault LEDs. Plus or minus 1 degree accuracy. Optional remote control panel and modem software.



Inside Story of the Burkay Genesis® Boiler



Mechanical Venting Flexibility

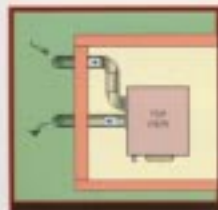
Direct-vent pressurized combustion

Allows clean, uncontaminated air to be drawn directly into unit. Flue gas by-products are expelled through wall to outside.

Sidewall or vertical

The Genesis® boiler can be vented directly through an outside wall or vertically through the roof.

Multi-venting Configurations

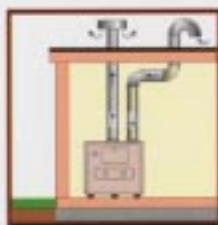


Horizontal Sidewall Direct-Venting Rear Intake/Exhaust

Up to 35 equivalent feet of intake and 35 equivalent feet of exhaust piping. 60' with optional extended venting kit.

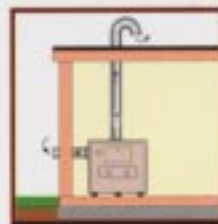
Note: 90° elbow is equivalent to 10 feet of straight pipe.

Multi-venting Configurations (continued)



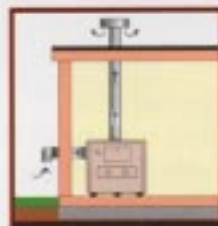
Vertical Direct-Venting Top Intake/Exhaust

Up to 35 equivalent feet of intake and 35 equivalent feet of exhaust piping. 60' with optional extended venting kit.



Horizontal Direct-Venting With Vertical Combustion Air Intake Top Intake/Rear Exhaust

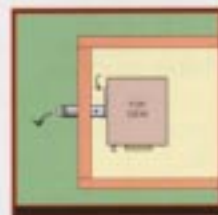
Up to 35 equivalent feet of intake and 35 equivalent feet of exhaust piping. 60' with optional extended venting kit.



Vertical Direct-Venting With Horizontal Combustion Air Intake Rear Intake/Top Exhaust

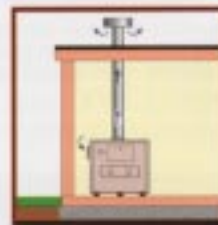
Up to 35 equivalent feet of intake and 35 equivalent feet of exhaust piping. 60' with optional extended venting kit.

Note: 90° elbow is equivalent to 10 feet of straight pipe.



Horizontal Sidewall-Venting Rear Exhaust

Up to 35 equivalent feet of exhaust piping. 110' with optional extended venting kit.



Conventional Vertical-Venting Top Exhaust

See installation manual.



For units sold in U.S.A.



For units sold in Canada

Hot Water Supply and Hydronic Boiler Dimensions

Model	Input Rating BTU/h: Natural & Propane (LP) Gas	Output Rating BTU/h: Natural & Propane (LP) Gas	Temperature Rise Degrees F-GPH			Vent Size (inches)	Inlet Air (inches)	Water Connections Size (inches)	Height (inches)	Depth (inches)	Width (inches)
			40	100	140						
GB/GW-200	199,900	167,318	507	203	145	4	4	1 1/2	30	24	22 3/8
GB/GW-300	300,000	251,100	791	304	217	6	6	1 1/2	30	24	29 1/8
GB/GW-400	399,000	334,716	1014	406	290	8	8	1 1/2	30	24	36 3/8
GB/GW-500	500,000	418,500	1298	507	362	8	8	2	30	24	41 5/8
GB/GW-650	650,000	544,050	1649	658	471	8	8	2	30	24	51
GB/GW-750	750,000	627,750	1952	760	544	8	8	2	30	24	57 1/4